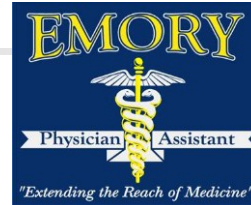


2010 Board Review

20th Annual Certification/Recertification Course

Emory University School of
Medicine
Physician Assistant Program
www.EmoryPA.org



EMORY

Albert Anderson, MD

Education: University of California at Berkeley
B.A. in History with completion of pre-medical curriculum, Cum Laude, 1993
University of North Carolina School of Medicine M.D., 2000
Duke University School of Medicine Masters in Health Sciences (Clinical Research), 2006
Postgraduate Training: Duke University Medical Center Internship and Residency in Internal Medicine
Clinical and Research Fellowship in Infectious Diseases

Currently: Clinical appointments (2006-present):
Attending Physician, Grady Health System Infectious Disease Clinic
Attending Physician, Special immunology inpatient service, Grady Memorial Hospital
Attending Physician, General medicine inpatient service, Grady Memorial Hospital
Attending Physician, Infectious diseases consult service, Grady Memorial Hospital



EMORY

Todd Antin, MD

- Medical Degree from University of Miami
- Psychiatric Residency and Fellowship in Forensic Psychiatry at New York University, Bellevue Hospital
- Currently: Dr. Antin is on the Faculty of the Philadelphia College of Osteopathic Medicine as a Clinical Instructor in the Department of Psychiatry and is Chief of the Department of Psychiatry at Dekalb Medical Center, Atlanta, Georgia. He is the founder and Medical Director of the multidisciplinary mental health provider group, PACT Atlanta LLC in Atlanta, GA. He is also the Medical Director for Behavioral Health Services at Dekalb Medical Center.
- Dr. Antin is Board Certified in Psychiatry, Addiction Psychiatry, Geriatric Psychiatry and Forensic Psychiatry. He has lectured around the country on a variety of topics related to the mental health field. He was recently named a Distinguished Fellow of the American Psychiatric Association in 2004 and has been named a "Top Doctor" by Atlanta Magazine on three separate occasions. The Consumers' Research Council of America named him one of America's Top Psychiatrists in 2006.



EMORY

Teresa Lianne Beck, MD

- Education: B.S., Chemistry/Biology, Middle Tennessee State University, 1989
- M.D., Uniformed Services Univ. of the Health Sciences, Residency – Family Medicine, Univ. of Florida/Shands Teaching Hospital, 1999
- Board Certification - American Board of Family Medicine, 2000, 2007
- Faculty Development Fellowship, Emory Dept FPM 1999-2001
-
- Currently: Emory University School of Medicine, Department of Family & Preventive Medicine:
- Assistant Professor, Clinical Tract, Department of Family & Preventive Medicine, 2001 - Present
- Assistant Program Director, Emory Family Medicine Residency Program, 2001 - Present
- Director of Residency Education, 2007 - Present
- Emory Medical Students Family Medicine Rotation Coordinator, 2007 – Present



EMORY

Roy Benaroch, MD

- Education: BSE in Engineering from Tulane University
- Medical degree from Emory University School of Medicine
- Residency in Pediatrics at Emory University School of Medicine
- Currently: Roy Benaroch is an Assistant Clinical Professor of Pediatrics at Emory. He practices general pediatrics with his group, Pediatric Physicians, at their locations in Roswell and Alpharetta, and lives with his wife and three kids in Dunwoody. His two books for parents, available at Amazon, are *A Guide to getting the best health care for your children* and *Solving health and behavioral problems from birth through preschool*. Dr. Benaroch also writes and publishes a blog at www.pediatricinsider.com. He is proud to have been a presenter at this conference since 1997.



EMORY

Tim Briscoe, PHARM D, CDE

- Education: Doctor of Pharmacy-Mercer University Southern School of Pharmacy
- Graduated Cum Laude 1993
- Currently: Senior Cardiovascular Medical Information Scientist for Astra Zeneca in their Scientific Affairs Division. He is also a Clinical Pharmacist Specialist in Family Medicine at Columbus Regional Healthcare System. Prior to this he was Clinical Pharmacist Specialist -Primary Care and Residency Program Director at Grady Health System, Atlanta. He has Adjunct Faculty appts at Morehouse School of Medicine-Dept of Internal Medicine, Mercer University Southern School of Pharmacy, and Emory University School of Medicine for the PA program. He is also Co-Director of the Pharmacotherapeutics Course for the Emory University PA Program. Tim is a Board Certified Diabetes Educator. He is married and has a 7 year old daughter.



EMORY

Geoffrey Brocker, MD,FACS

- Education: B.S. in Chemistry, Muhlenberg College, 1973
- M.D., Albert Einstein College of Medicine, 1976
- Flexible Internship, Bryn Mawr Hospital, 1976-77
- Residency in Ophthalmology, Wills Eye Hospital, 1977-80
- Board Certification in Ophthalmology, 1981
- Currently: Emory University School of Medicine, Department of Ophthalmology:
- Assistant Professor, 1988-1994, Associate Professor, 1994-2001; Professor, 2001-present
- Director of Residency Education, 1988-2000, Chief of Service, Ophthalmology, Grady Memorial Hospital, 1988-present



EMORY

Stephen Brown, MD

- Education: Undergraduate degree from Princeton University. Medical degree from Yale University School of Medicine. Internal Medicine Residency completed at Northwestern University's McGaw Medical Center and his Pulmonary fellowship at New York University. He is board certified in internal medicine and pulmonary medicine.
- Currently: Private practice in Milwaukee, Wisconsin. He has served as a member of the clinical Faculty of the Medical College of Wisconsin and the University of Wisconsin School of Medicine for nearly 20 years. He has lectured internationally in many aspects of pulmonary, critical care, sleep and palliative medicine. He enjoys bicycling and collecting vintage high school and college yearbooks as well as comic-strip related art and paraphernalia.



EMORY

Greg Burke, PA-C, MMSc

- Education: BS in Microbiology from Georgia Tech
- MMSc Emory University Emory PA Program
- Currently: Practicing with Piedmont Radiology in Interventional Radiology. Before joining Piedmont Radiology he worked for 5 years in Thoracic Surgery with Emory at Crawford Long Hospital and then 5 years in General Pediatrics at Northlake Pediatric Associates in Stone Mountain, GA. Greg is active in the Emory University Physician Assistant Program. He has a recent appointment at Emory University as a Clinical Instructor and is the co-director of the microbiology course. He also serves as a guest lecturer, lab instructor, and clinical preceptor for both Emory University and the Mercer University Physician Programs.



EMORY

Chris Carter, PA-C, MMSc

- Education: Undergraduate work at Oglethorpe University. Master of Medical Science degree from Emory University PA Program in 1991.
- Currently: Cardiology in Atlanta. Previously in Internal Medicine for the last 8 years at Piedmont Physicians in Atlanta where he also mentors PA students for Emory, and is a guest lecturer for the Emory PA Program. He received the GAPA PA of the Year Award for 2004. He is married and has 2 daughters.



EMORY

Carter Cooper, PA-C, MMSc

- Education: Bachelors at Georgia Tech, followed by a Master of Theology at Dallas Theological Seminary, and finally the Master of Medical Science degree from Emory University PA Program 1997
- Currently: Surgical PA for Peachtree Neurosurgery, Atlanta. He has published articles in *JAAPA* & the *PA Journal*. He is a clinical mentor and guest lecturer for the PA Program, and in 2001 was selected Didactic Teacher of the Year.



EMORY

Janice Herbert-Carter, MD, MGA, FACP

- Education: AB in Biochemical Sciences, African American Studies, and Science in Human Affairs from Princeton University; Doctorate of Medicine from Howard University College of Medicine; Residency in Internal Medicine at Howard University Hospital; Master's degree in Healthcare Administration at the University of Maryland
- Currently: Morehouse School of Medicine since 1990- first with the Dept of Medicine now with the Dept of Medical Education and Dept of Family Medicine and Associate Director for Education for the National Center for Primary Care. Course Director of the Pathophysiology Course. She has taught in the Faculty Development Program since 1997. She has received numerous teaching awards from the students at Morehouse School of Medicine, as well as Didactic Teacher of the Year Award in 1995 from the Emory PA Program. She is a Fellow of the American College of Physicians. She has worked with the National Board of Medical Examiners where she was an itemwriter for Step 1 and Step 2 has served on numerous committees. She is a favorite lecturer at the Emory PA Program, and she has been a guest lecturer at the AAPA National Conference.



EMORY

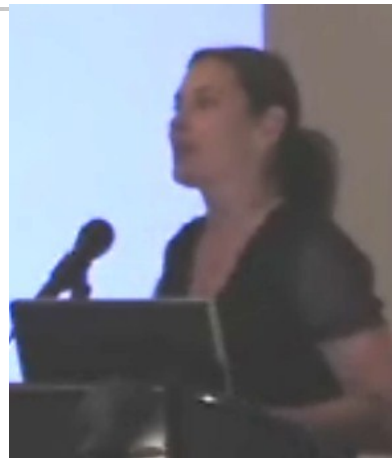
Jeff Chambers, PA-C, MMSc M.Ed, ATC

- Education: BSED Exercise and Sport Science, University of Georgia 1991
- M.ED Masters of Health Education, University of Georgia 1998
- MMSc Master of Medical Science, Emory PA Program 2000
- Currently: Jeff works in general orthopedics and sports medicine in Athens, GA as well as in the Emergency Department at Northeast Georgia Medical Center in Gainesville. Jeff is active in the Georgia Association of Physician Assistants where he serves as a past President. Jeff is a resident on Bishop, GA and is married with three boys. He is a preceptor and lecturer for the Emory PA Program



Beth Halminski, PA-C MMSc

- Education: BS Microbiology, University of Georgia
- MMSc Master of Medical Science, Emory PA Program 1993
- Currently: Beth works with the Piedmont Ear, Nose, Throat and Allergy group. She lectures regularly to the Emory PA students.



Caroline Howell, PA-C, MMSc

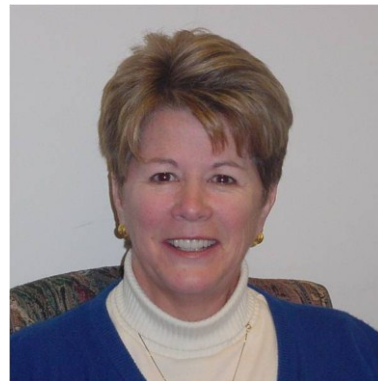
- Education: Bachelor of Science, University of Michigan, Ann Arbor, Michigan 1995
- Master of Medical Science, Emory University PA Program 1999
- Currently: Carrie has worked in the field of dermatology for 9 years and currently works at Georgia Skin Specialists in Atlanta. Carrie serves as a lecturer, lab instructor and clinical preceptor for the Emory PA Program. She is married to another Emory PA, Evan
- Howell, who works in Emergency Medicine and has a 2 year old daughter.



EMORY

Virginia Joslin, PA-C, MPH

- Education: 1983 graduate of the Emory University PA Program
- Masters of Public Health degree from Emory University Rollins School of Public Health Fellowship in Geriatrics 1986 Stanford University.
- Currently: Educator of the Year PARagon award 1999 and was named the GAPA Outstanding PA of the Year in 1996. Division Director of the Emory PA Program. ECG Course director and co-presented workshop on interpretation of heart sounds with Karen Newell at several AAPA conferences.



EMORY

David Kuhar, MD

- Education: Undergraduate degree from Oberlin College in 1994 Medical degree from Emory University Medical School in 2000 Internship/residency at NYU Medical Center Infectious disease fellowship at Mount Sinai Medical Center, New York
- Currently, I'm a clinical Instructor of Medicine at Emory in the Division of Infectious Diseases, and the director for Emory's Outpatient Parenteral Antimicrobial Management Program. I'm a clinician/educator at Crawford Long's Infectious Disease Clinic doing HIV medicine and general infectious disease consultation.



EMORY

Arch Lamb, PA-C, MMSc

- Education: Bachelor of Science, Agricultural Economics, Texas Tech University 1973
- Master of Medical Science, Emory University PA Program 1999.
- Physician Assistant, 2002 to Present The Southeast Permanente Medical Group, Department of Gastroenterology, Atlanta Ga
- Physician Assistant, 2000 to 2002, Advanced Gastroenterology, Duluth Ga



EMORY

Michelle Morante, PA-C, MMSc

- Education: MMSc in Medical Science, Emory PA Program
- Currently: Greater Atlanta Women's Healthcare in OBGYN (worked with this group for 8 1/2 years) and I also do surgical first assisting with Surgical Assistants of America. I am also a lecturer for the PA program during the OBGYN lecture series.



EMORY

Melissa Osborn, MD

- Education: 1995 BS in Biology, Mount Union College, Alliance, OH
- 1999 MD, The Ohio State University, Columbus, OH
- Residency in Internal Medicine, Emory University,
- Fellowship in Infectious Diseases, Emory University,
- 2006 MS, Clinical Research, Emory University,
- Assistant Professor in the School of Medicine at Emory University in the Division of Infectious Diseases. She attends on the wards at both Grady Memorial Hospital and Emory Midtown Hospital for both general infectious diseases and the Special Immunology (HIV/AIDS) services. Her primary clinical and research focus is in HIV and viral hepatitis, and she has lectured nationally and internationally on this topic. She was the 2009 recipient of the Jonas A. Shulman Faculty Teaching Award in the Division of Infectious Diseases.



EMORY

Karen Newell, PA-C, MMSc

- Education: 2006 Master of Medical Science in Career Physician Assistant Emory University School of Medicine (Graduated with Honors)
- 1990 Norwalk Hospital/ Yale University School of Medicine Post-Graduate Physician Assistant Surgical Residency
- 1989 Bachelor of Medical Science and PA Certificate Emory University School of Medicine
- 1986 Bachelor of Science in both Biological Science and Zoology Minor in both Anatomical Science and Music Colorado State University
- Currently: Karen has been an Academic Coordinator for the Emory University School of Medicine PA Program since 1995. In this capacity, she serves as the Emergency Medicine Course Director, an Anatomy Instructor, and directs many of the Clinical Skills Labs. After a three year hiatus, Karen is happy to rejoin us in giving this Emergency Medicine Review talk for the 14th time.



EMORY

Allan Platt, PA-C, MMSc

- Education: 1977 graduate in Health Systems, Georgia Institute of Technology
- 1979 graduate of the Emory University PA Program
- 2006 graduate of the Career Masters in Physician Assistant at Emory
- Currently: Faculty member of the Emory PA Program, Advanced Didactic Co-Coordinator, Awarded the Clinical Teacher of the Year Award by the graduating class of 1993. 2002 AAPA Paragon Teacher of the year award. 2007 SAAPA Presidents award, Course Director of the Behavioral Medicine and Professional Issues courses for the Emory didactic PA students.



EMORY

Tonia Poteat, PA-C, MMSc, MPH

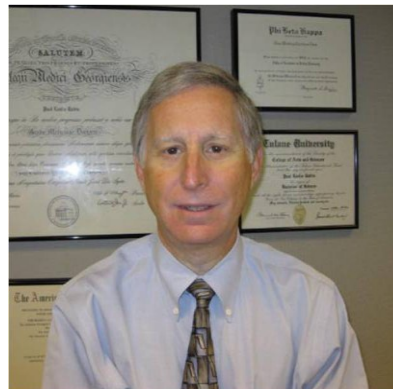
- Education: 1991 BA in Biology, Yale University
- 1995 MMSc from Emory University PA Program
- 2007 MPH from Rollins School of Public Health
- Currently: The last 7 years have been spent as a PA at the Grady Infectious Disease Program and as a clinical instructor with the Southeast AIDS Training and Education Center. Certified as an HIV Specialist by the American Academy of HIV Medicine since 2002. Received designation as a Distinguished Fellow of the American Academy of Physician Assistants in 2007



EMORY

Paul Rubin, MD

- Education: 1980 MD Medical College of Georgia
- Residency in Urology University of Tennessee College of Medicine
- Board certification in Urology
-
- Currently : Practicing Urology with North Georgia Urology in Lawrenceville and Tucker. Teaches Emory Family Practice residents. Voted one of Atlanta's Top Doctors in Atlanta Magazine 2007.



EMORY



Bradford W. Schwarz, M.S, PA-C

- Education: BS University of Oklahoma, College of Medicine, USAir Force PA Training Program , 1984 Master of Science in Medical Science, Alderson Broaddus College, 1996
- Currently: Program Director, Mercer University PA Program in Atlanta
- Assistant Professor, Lt Colonel Aeromedical Physician Assistant, US Air Force Reserve, Pentagon Flight Medicine Clinic Editorial Review Board for *Prospective on Physician Assistant Education*



EMORY